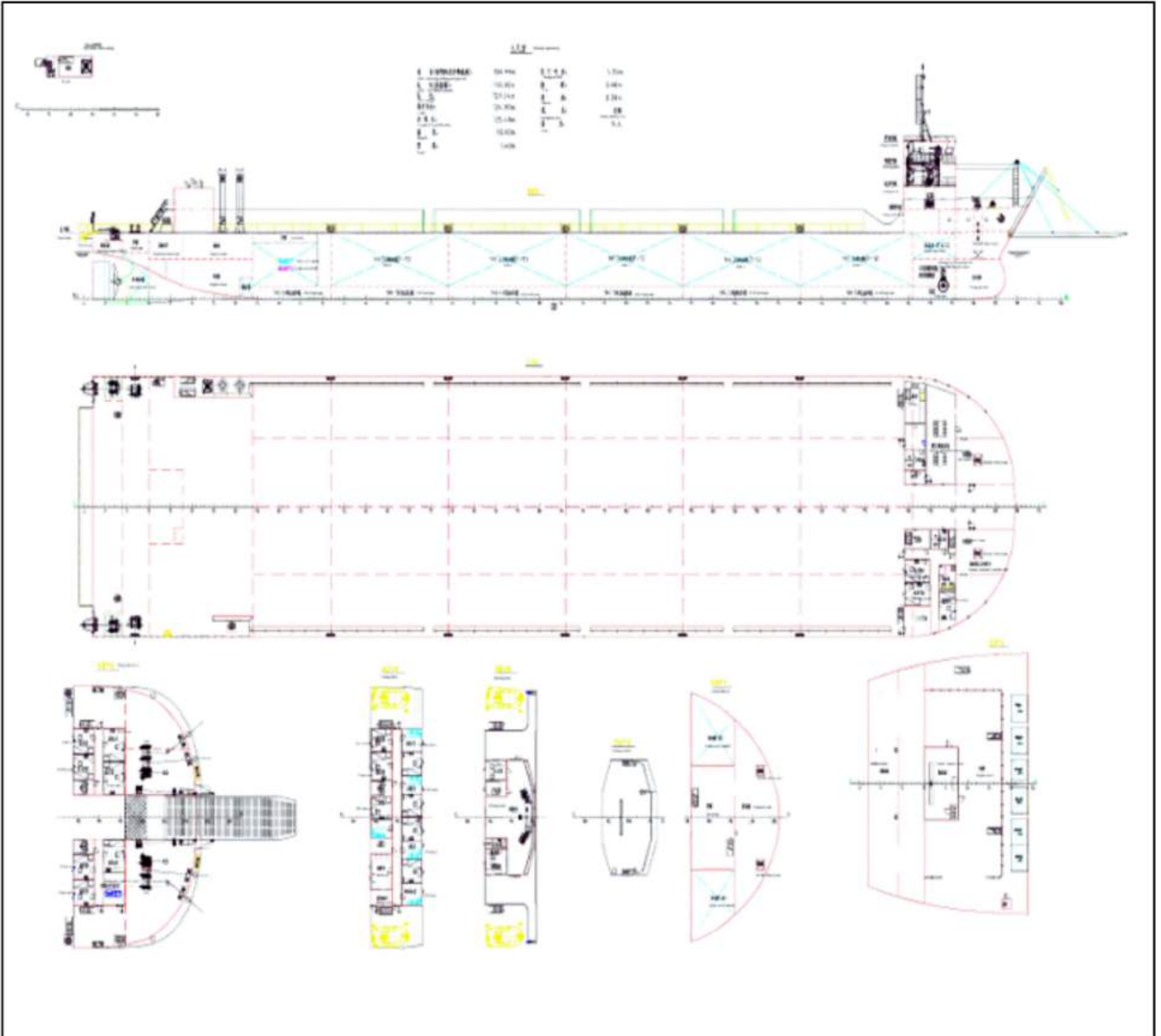


VESSEL OUTLINE SPECIFICATION
Deck Cargo Ships/Self-Propelled Barges
Ship Name: VIVA-05

Ship's Name	VIVA-05	Nationality	China
Type of Ship	Deck Cargo Ship	Port of Registry	China
Navigation Zone	Great Coastal Service	Built Date	2022
Length of All	129.34m	Operational Sea Area	A1+A2
Depth	7.6m	Breadth Moulded	30m
Length of Load Waterline	125.48m	Length Between Perpendiculars	124m
Loaded Draft	5.35m	Light Ship Draft	3.854m
Full Load Displacement	18090.5t	Light Displacement	3602.78t
Gross Tonnage	8262t	Hull Material	Steel
Service Speed	10 kn	NET Tonnage	4626t
Fresh Water Capacity	357.6m ³	Fuel-oil Capacity	518.62 m ³
Deck Loaded Areas	3305m ²	Water Ballast Capacity	7985.53 m ³
Load Capacity	3600 t/h	Main Engine	2× 2060Kw
Deck Loaded Tonnages	13560t	Generator Group	2×300Kw 1×75Kw 1×120Kw
Deck Strength	7.5 t/m ²	Emergency Generator	1×50Kw
Propelling System	FPP	Propeller	2×φ4200mm
Main Fire Pump	2×95m ³ /h	Anchor Chain	1×302.5×φ56mm(S) 1×275×φ56mm(P)
Emergency Fire Pump	1×61m ³ /h	Windlass	2×55Kw
Life Boat	2×18 people	Anchor	2×5250Kg Speke anchor
Life Jacket	20 people	Life Raft	2×15 people, 1×6 people

VESSEL OUTLINE SPECIFICATION
Deck Cargo Ships/Self-Propelled Barges
Ship Name: VIVA-05

Standard Magnetic Compass	1×CPL-165	Steering Compass	1×CPT-165A
GPS	1×GN150	EPIRB	1×NEB-1000
Radar	1×JMR-5312-6	VHF	2×FT-805
Electronic Chart	1×HM-5817	AIS	1×NSI-1000
SART	2×CY-AIS-SART	NAVTEX Receiver	1×NTX100A
MF/HF	1×FT-7500	TWO-WAY VHF	3×CY-VH01
Inclinometer	2×LQ-200	Echo Sounder	1×ES-9000



VESSEL ACTUAL IMAGES

SHIP NAME: VIVA-05



VESSEL ACTUAL IMAGES

SHIP NAME: VIVA-05



VESSEL ACTUAL IMAGES

SHIP NAME: VIVA-05

